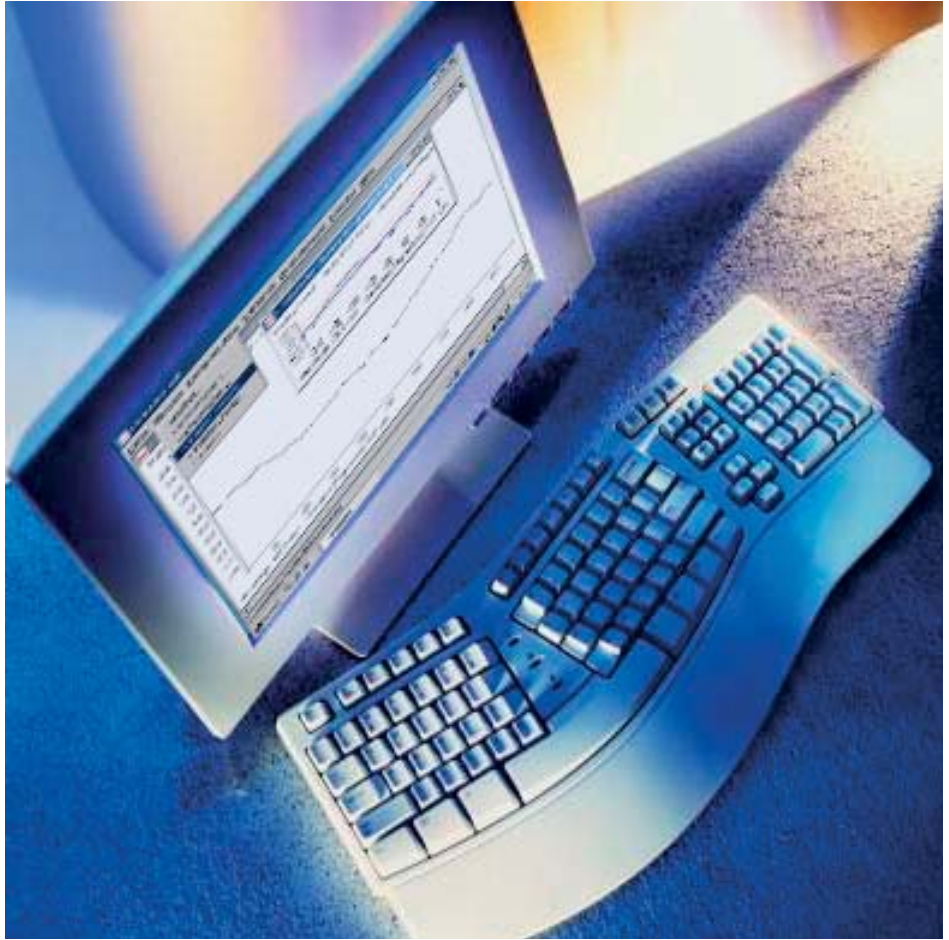


STRAIGHT-soft



STRAIGHT-soft, the efficient measuring and evaluation software

■ STRAIGHT-soft is a helpful, easy to handle measuring and evaluation programme. Developed as an efficient software-programme to calibrate reference angles and straight edges, it is an indispensable aid in the measuring laboratory, the workshop or when carrying out measurements on geometry during acceptance of machinery.

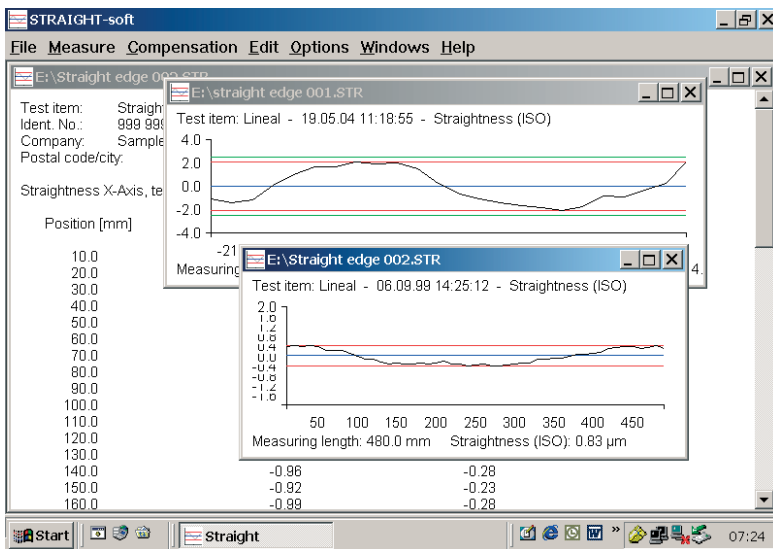


Straightness measurement on a guide way

for the intended measurement are entered in the dialogue. At each interval the measured data will be scanned by the trigger, which is connected to the read out system, and imported to the PC. The measured value may also be entered manually, using the keyboard. As soon as the measurements are taken, the calculated values are shown in a graphic mode on screen. The relevant evaluation-method** can be customised and the measured value be printed and saved as a file.

* As standard version STRAIGHT-soft is working with the devices of the latest generation from TESA and MAHR. If you are using a different read out system you may have to ask for details.

** The calculation of the different elements is alternatively done with either the regression, the endpoint, or by ISO-norm.

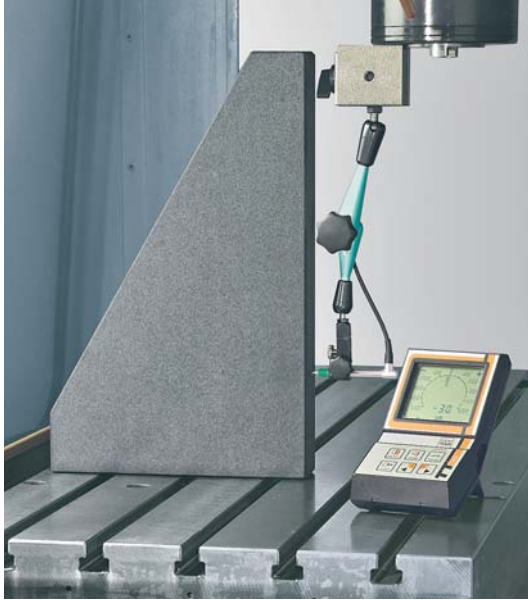


Display of measuring data on screen

■ The handling of STRAIGHT-soft is simple and userfriendly. Usually a digital read out system* together with an inductive probe is employed for the measurement. The parameters and intervals



Straightness and parallelism measurement with the measuring system STRAIGHT-line

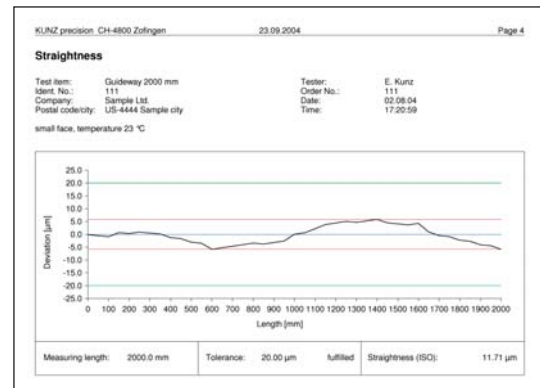


Straightness and squareness measurement on a machine-tool

The measured data may also be exported via clipboard into other files. Also the import of measuring data from Excel is very helpful. Various practical possibilities simplify the handling

of STRAIGHT-soft. For example the file can be used later as a template where parameters and protocol data are already specified.

■ Option error compensation: The error compensation is useful to eliminate possible errors of the guide way. This is done by measuring with the reversal method and then saving the file as an error compensation file. Thereafter the measuring can be carried out with the appropriate compensation.



Clear and concise display of protocol data ■

Technical data

Last Update Version	2.3
PC-System	Windows 98 / 2000 / NT / XP
Languages	German / English / French
Operation	with keyboard or mouse
Measurement reading	manual with keyboard or automatic with RS 232
Measured elements	Straightness with one element Squareness 1, with one element Squareness 2, with two elements Parallelism with two elements, probes placed reciprocal Parallelism with two elements, probes placed synchronical Absolute parallelism
Import / Export	by Microsoft Excel
Output	Printer / PDF
Tolerance-control	yes



■ «Measuring and calibration to the highest precision is our daily challenge. The fascination of measuring technology motivates us to meet the most demanding requirements of our customers both now and in the future.»

Ernst Kunz



Riedtalstrasse 16
CH-4800 Zofingen
Switzerland

Fon: +41 (0)62 746 00 20
Fax: +41 (0)62 746 00 21
E-mail: mailbox@kunz-precision.ch
www.kunz-precision.ch